

LES ESTUDIANTES

RÉSIDENCE ÉTUDIANTS
1 ROUTE DE GALICE
13100 AIX EN PROVENCE

FONCIERE URBAINE - GALICE

255 AVENUE DU PRADO
LE PULMAN BAT. C
13008 MARSEILLE

CARNET DE DETAILS

JEAN-MICHEL BATESTI

ARCHITECTES & ASSOCIES

37. BD EDOUARD - HERRIOT
13008 MARSEILLE
TEL 04.91.32.14.20
FAX 04.91.32.14.29
battesti.archi@wanadoo.fr

S.A.R.L. D'ARCHITECTURE
CAPITAL: 10.000 €
RCS MARSEILLE B 381593912
S.I.R.E.T. 381 593 912 000 11
ORDRE DES ARCHITECTES N°S151

BUREAU D'ÉTUDES:

BET SIGMA INGENIERIE
Grand Angle - 4 Place Barthélémy Niollon - 13100 AIX EN PROVENCE
Tél: 04 42 26 03 04 / Fax: 04 42 93 61 82 / sigma.ing@wanadoo.fr

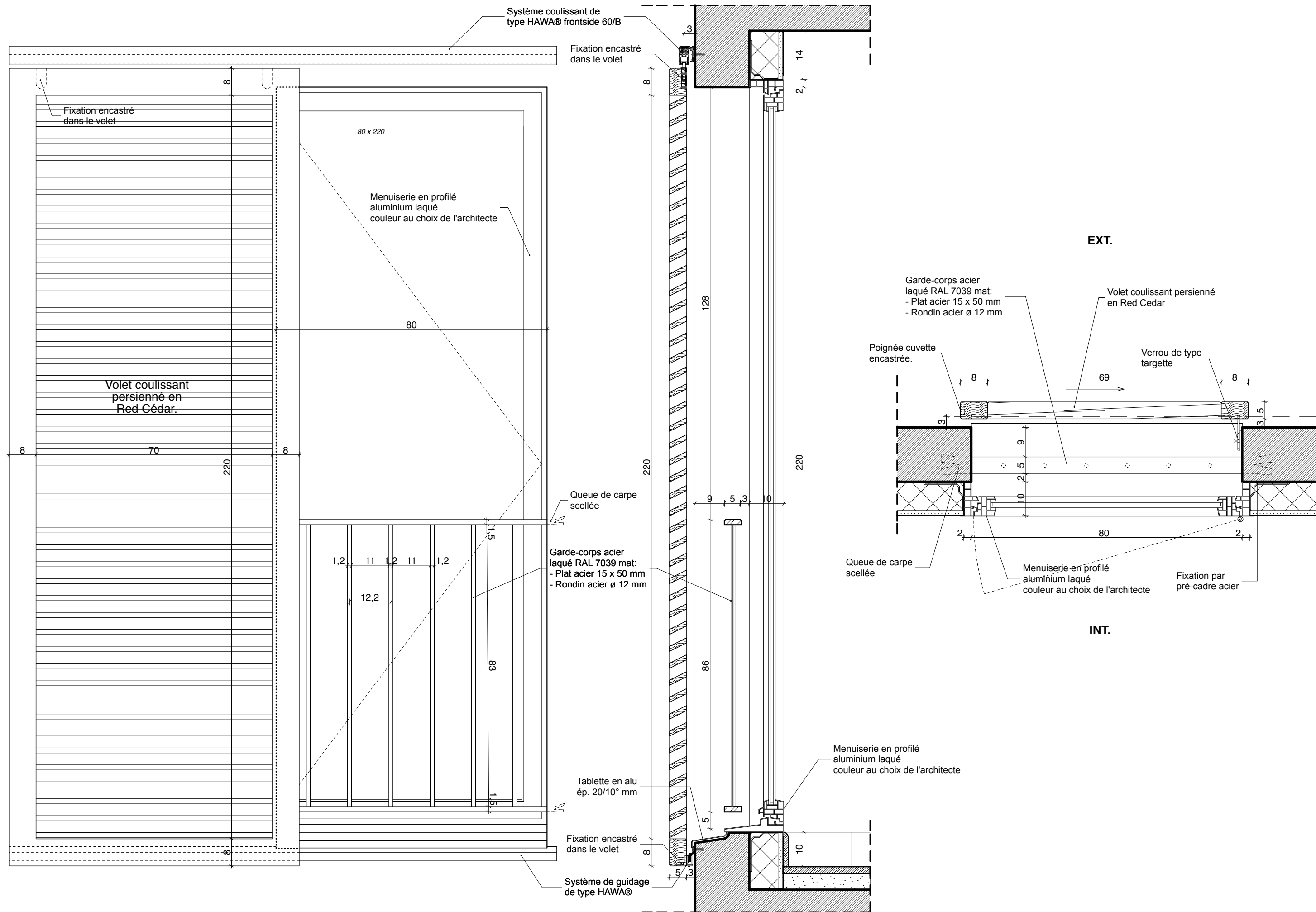
BET Y.GARNIER
28 Rue du Petit Chantier - 13007 MARSEILLE
Tél: 04 96 11 20 98 / Fax: 04 91 54 28 93 / contact@betgarnier.fr

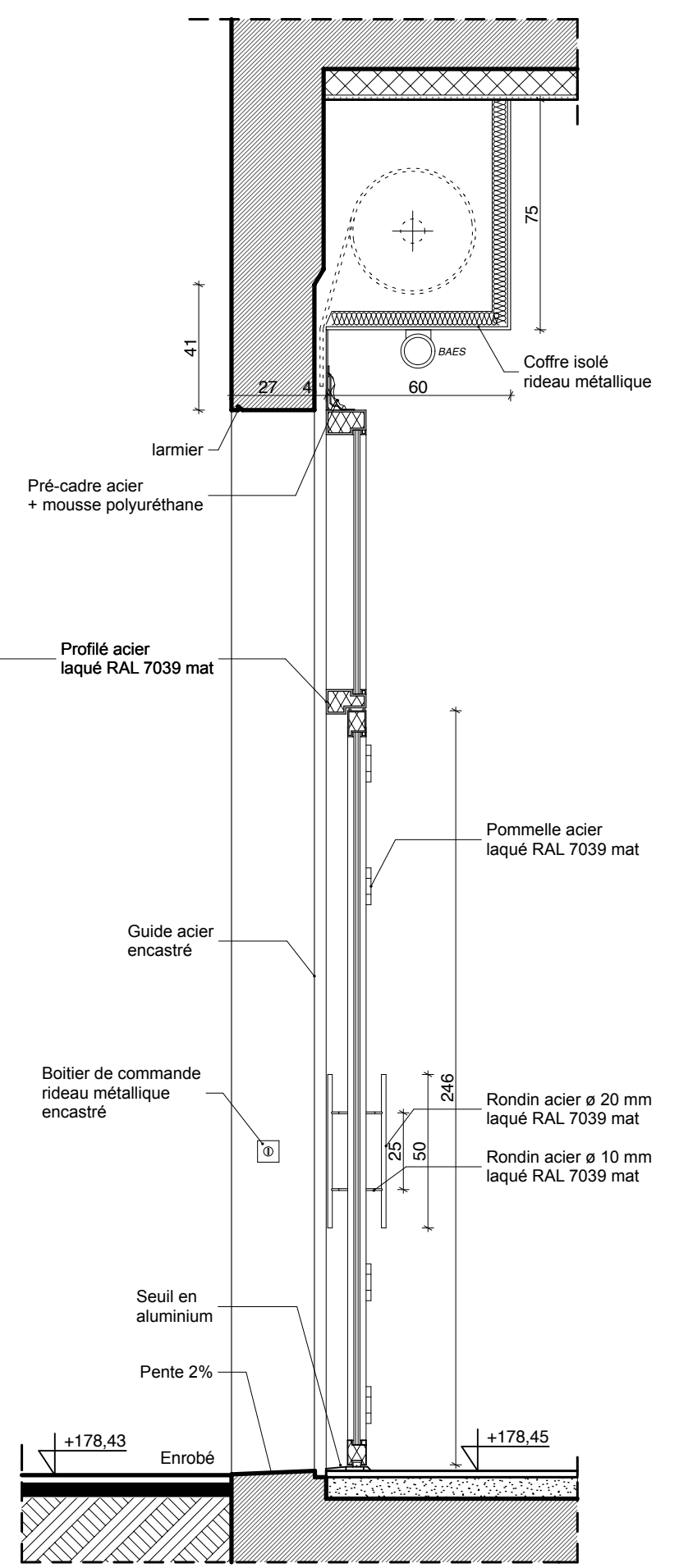
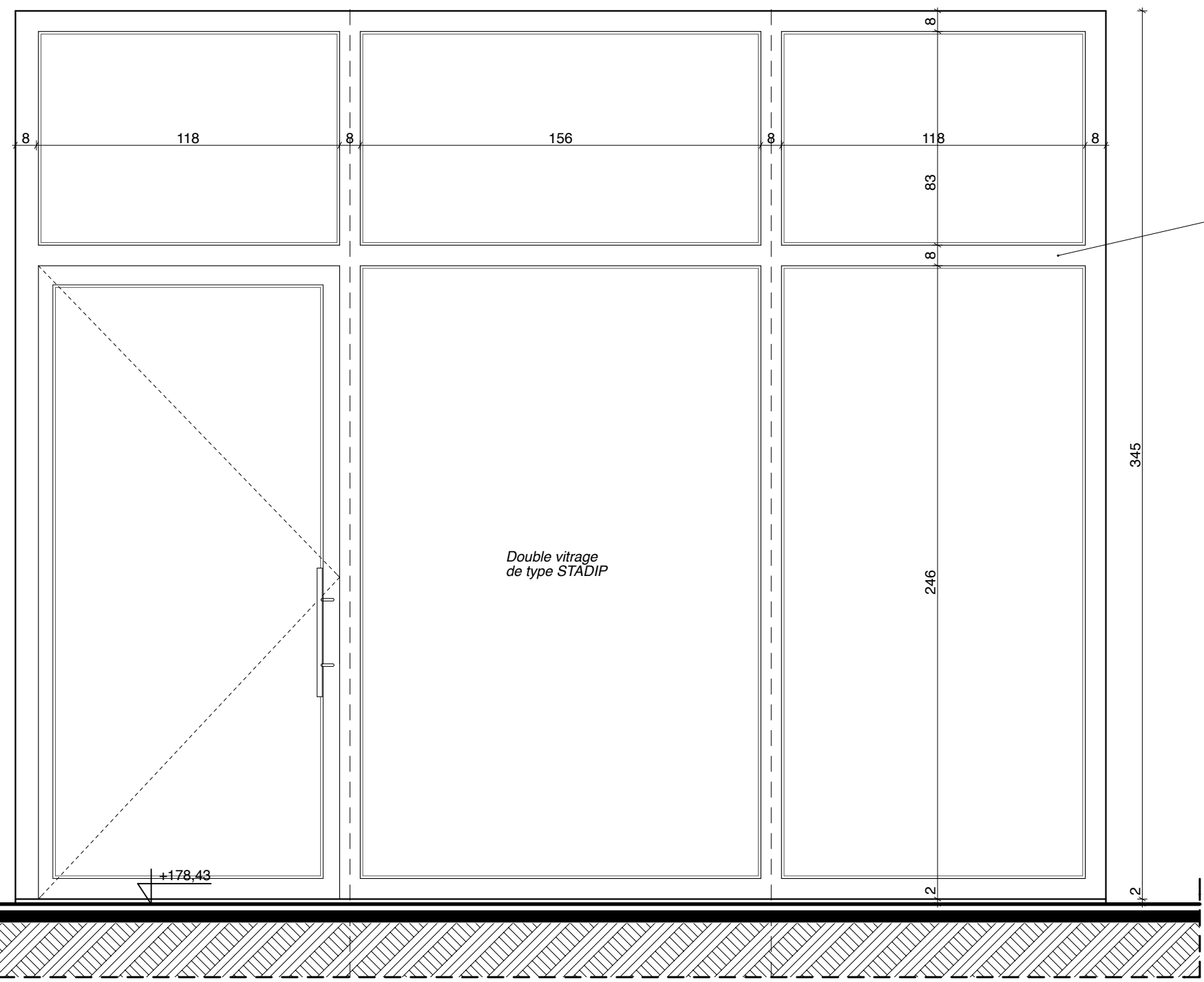
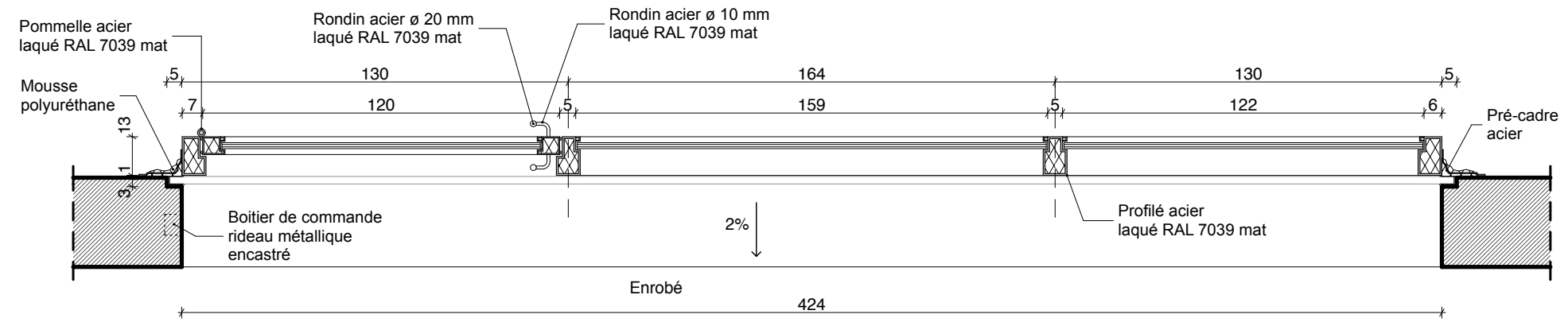
BET IDEM
74 Avenue de Mazargues - 13008 MARSEILLE
Tél: 04 91 29 73 60 / fax: 04 91 41 07 37 / bet.idem@wanadoo.fr

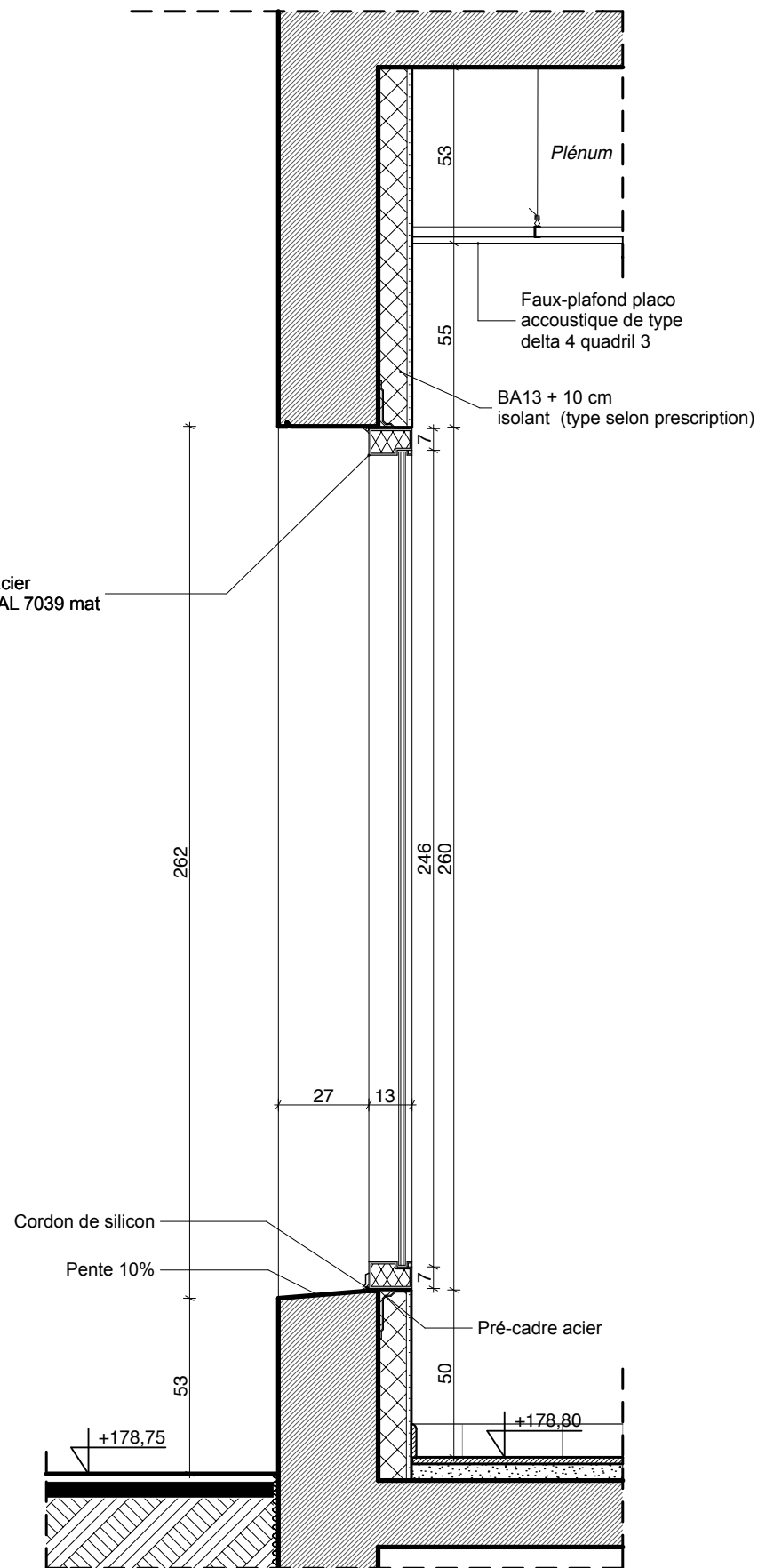
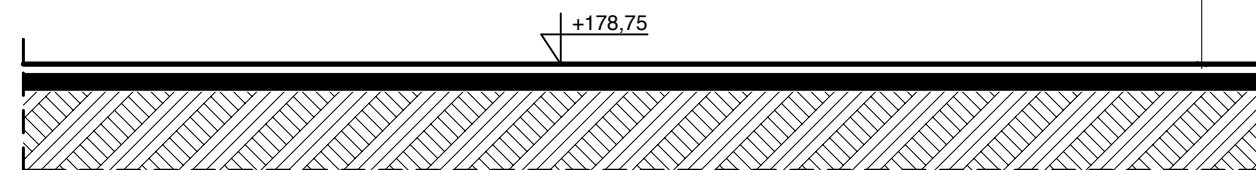
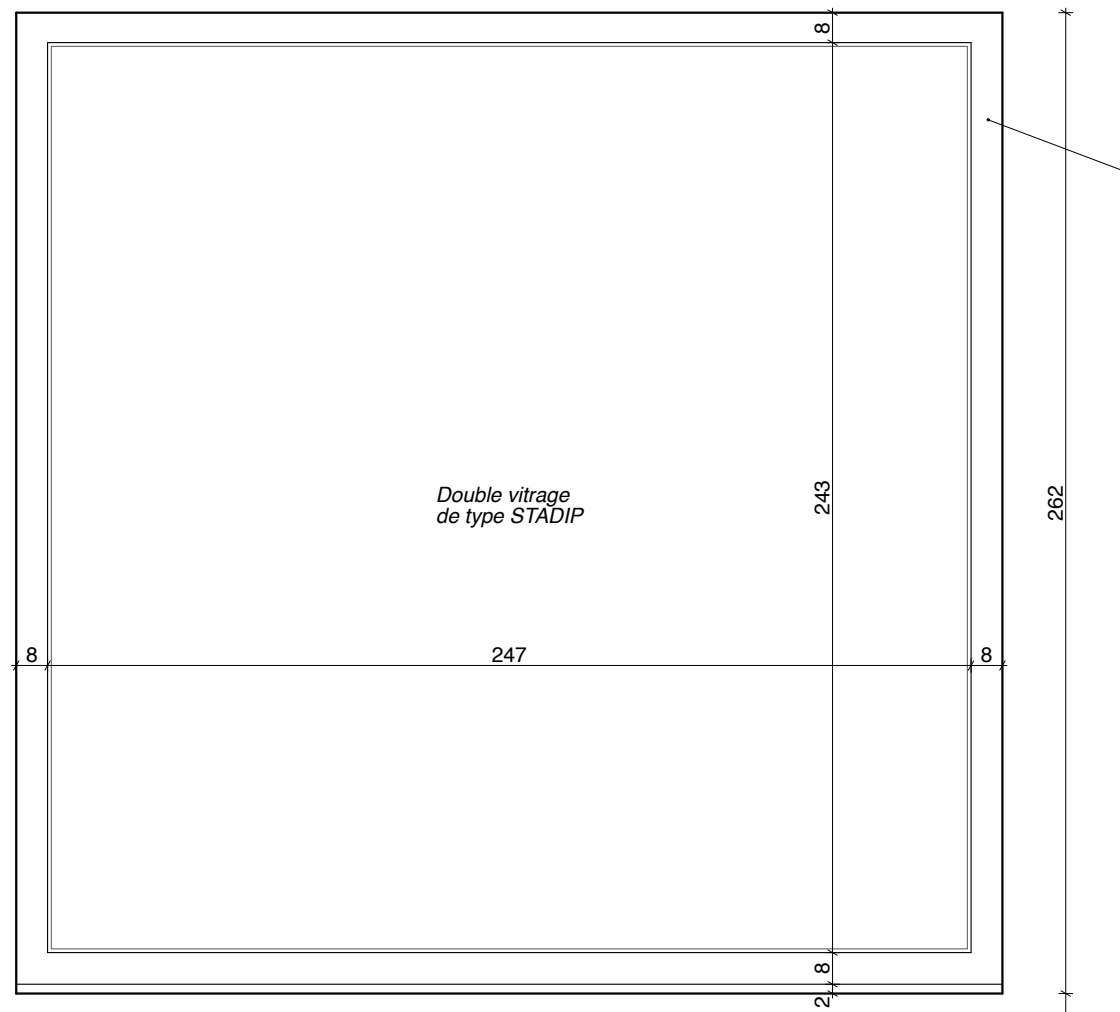
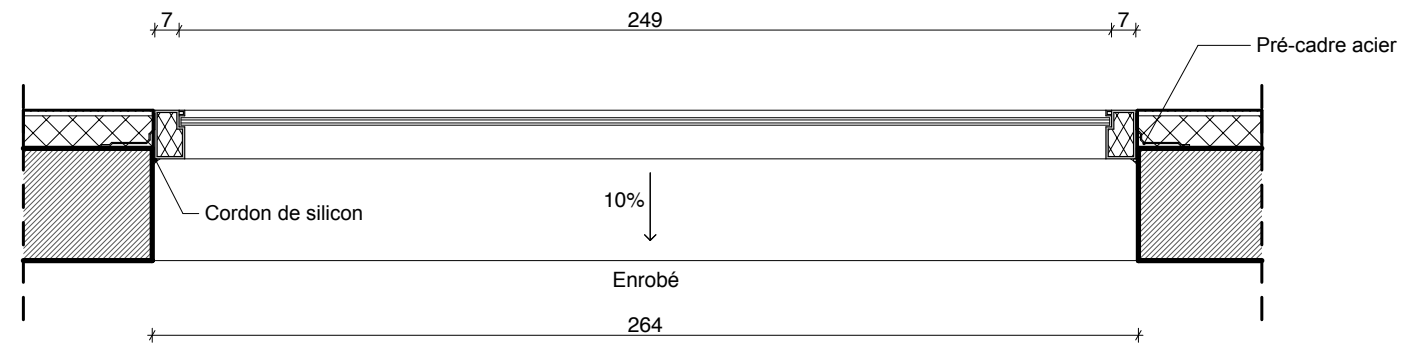
DATE	PHASE	EHELLE	N° DU PLAN
FÉVRIER 2011	PRO-DCE	-	16

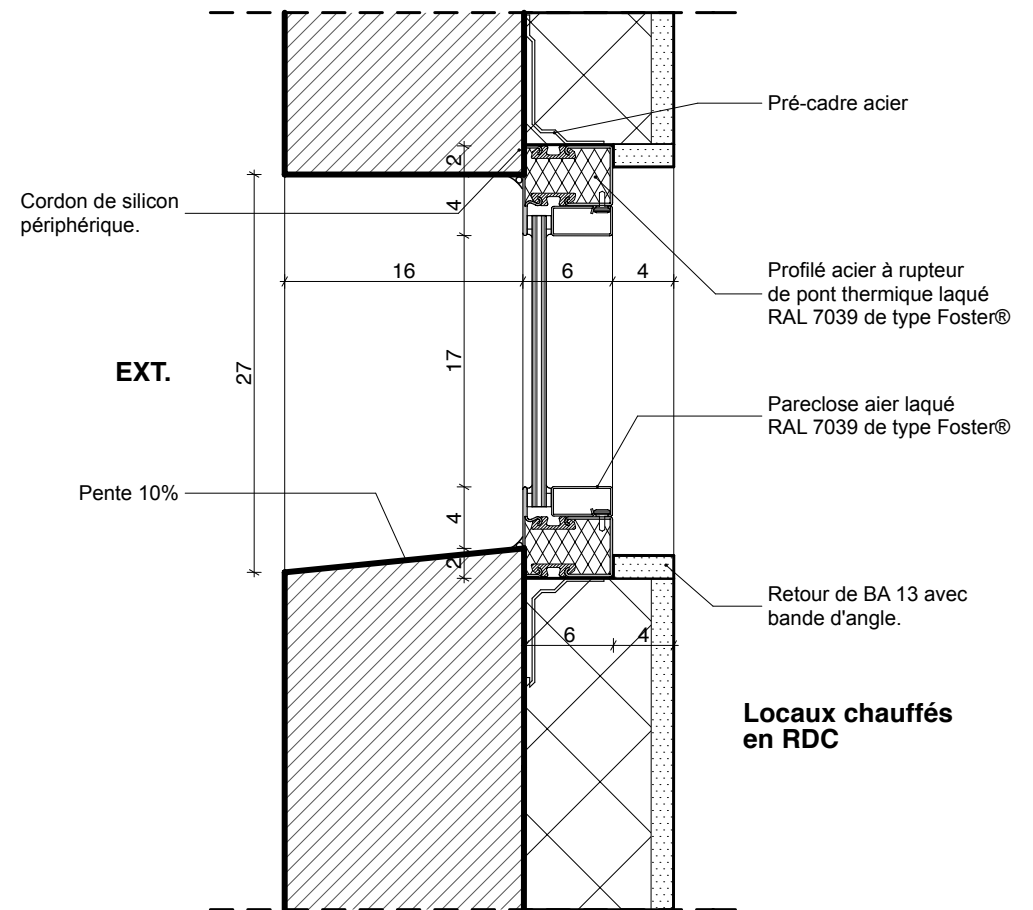
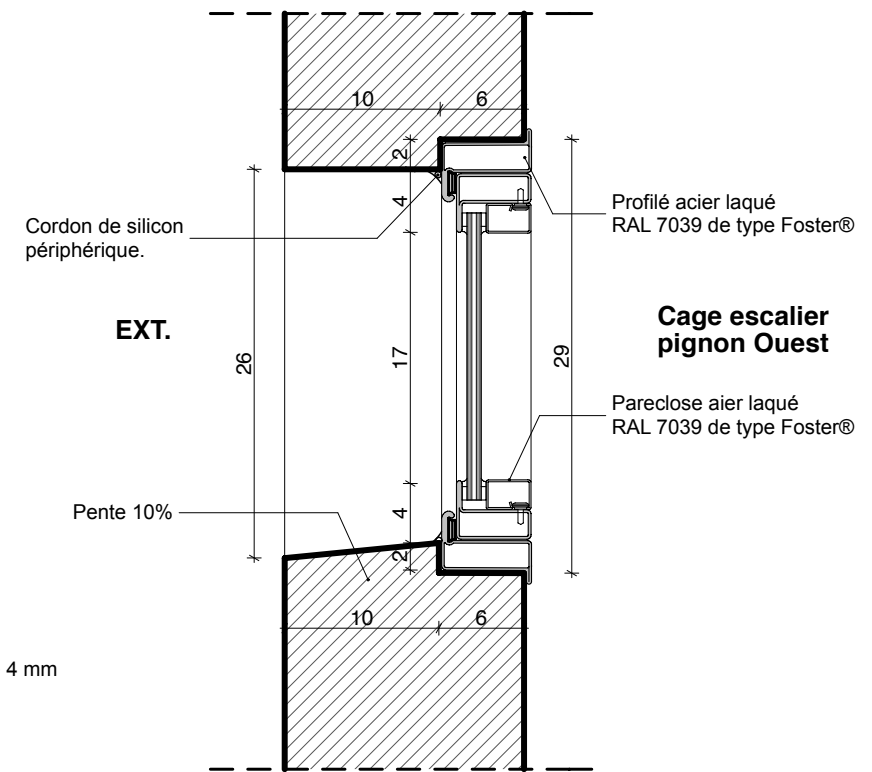
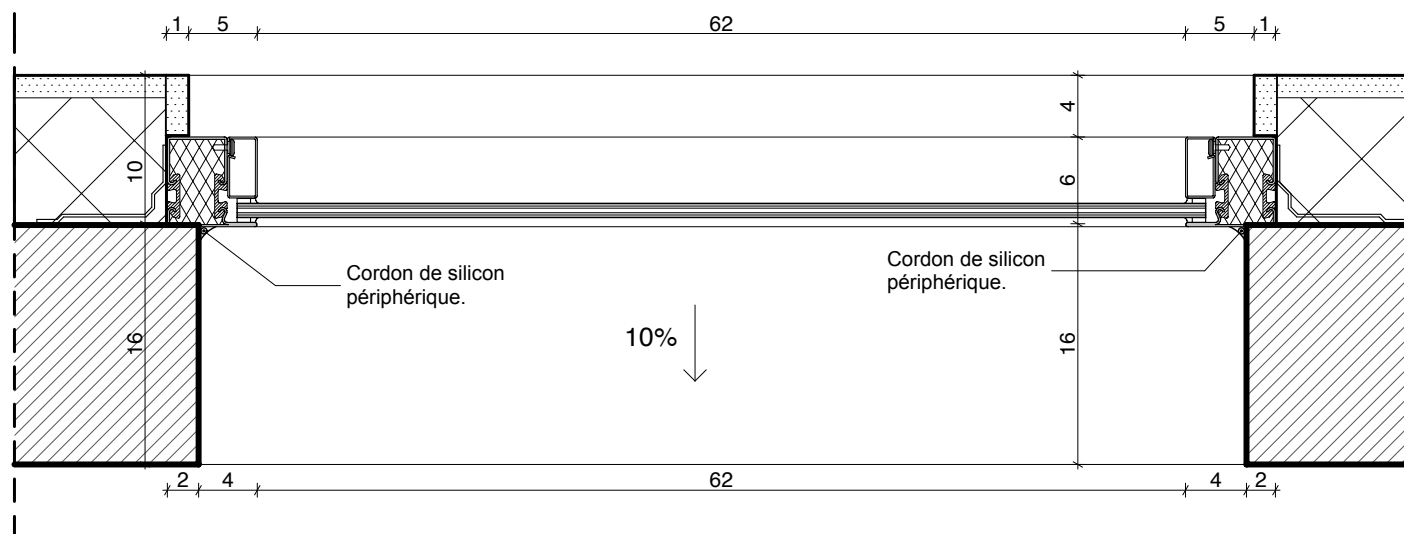
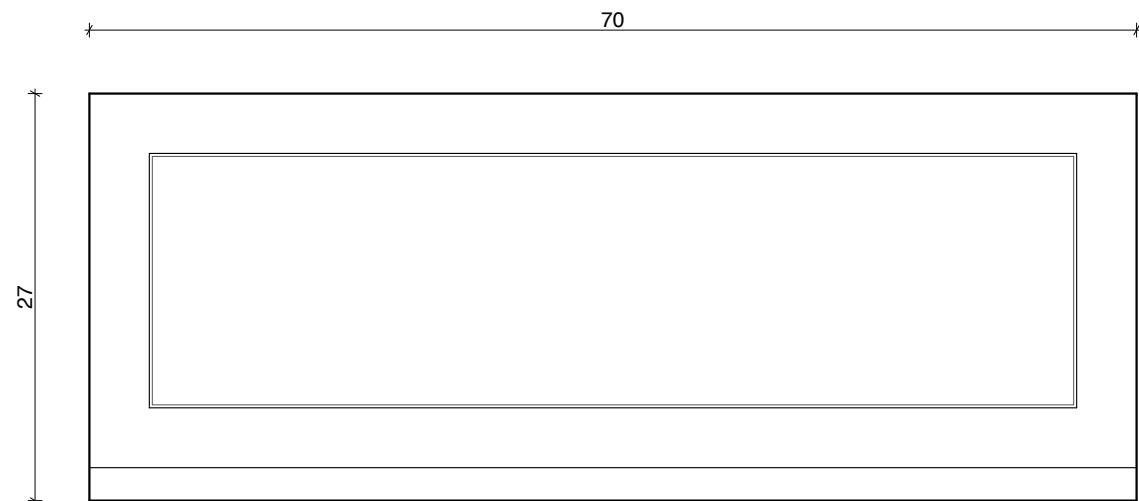
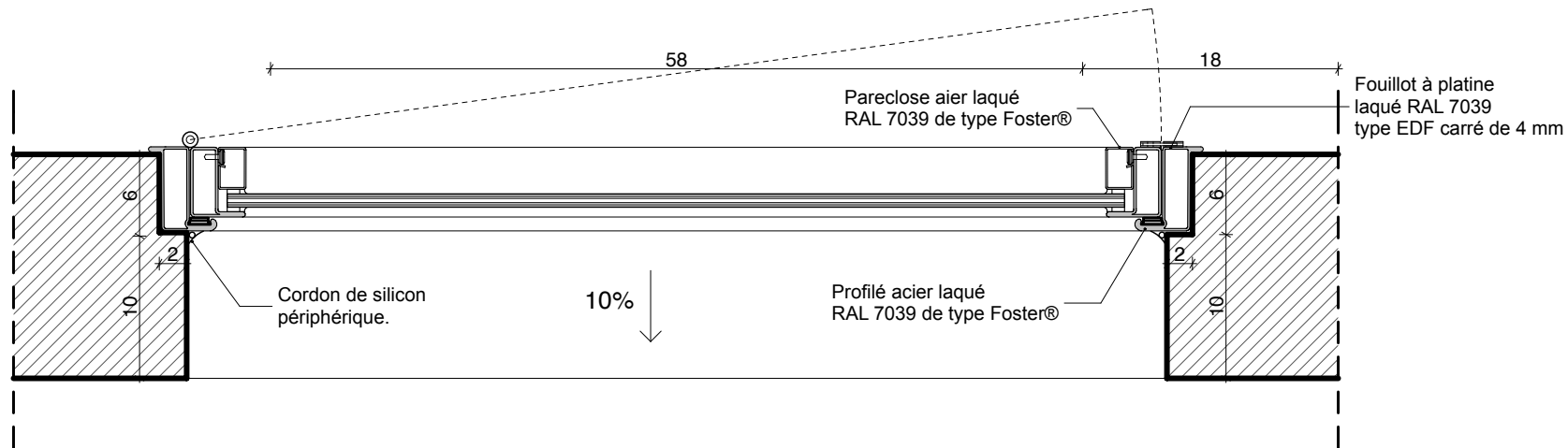
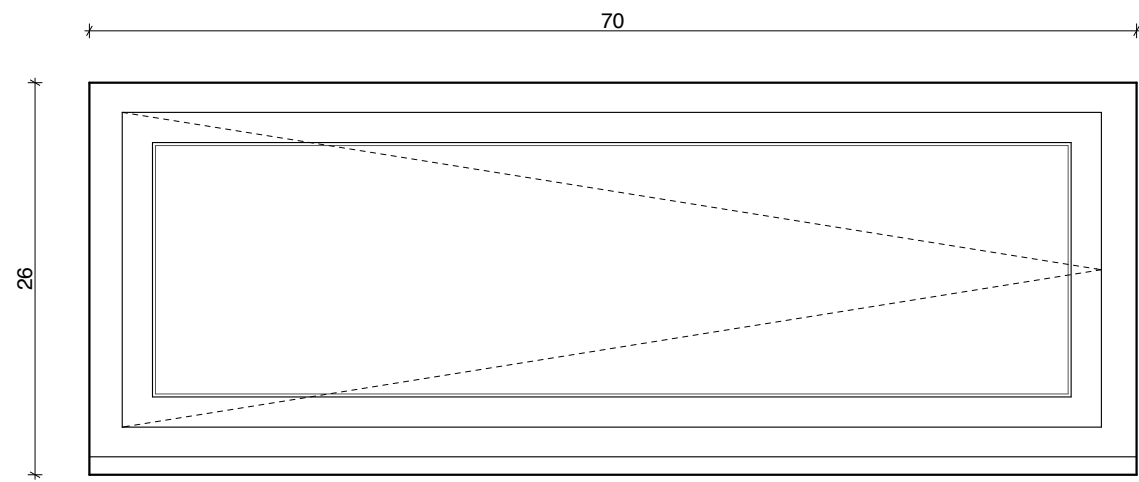
LISTE DES DETAILS

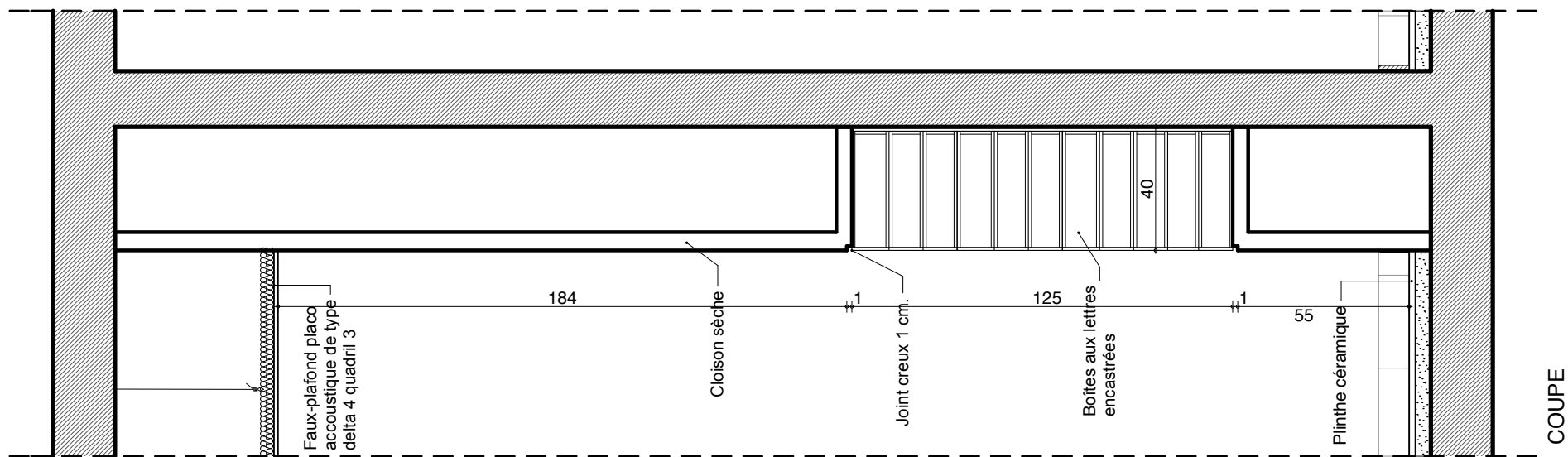
16.1 Détail porte-fenêtre et volet coulissant bois - Logements	1/10°
16.2 Détail vitrine - local logistique	1/20°
16.3 Détail châssis fixes - Salle petit déjeuner	1/20°
16.4 Détail bandeaux vitrés - RDC / Cage d'escalier	1/5°
16.5 Détail boîtes aux lettres - SAS (plan)	1/20°
16.6 Détail boîtes aux lettres - SAS (coupe)	1/20°
16.7 Détail gaine palière - Etage courant	1/20°
16.8 Détail kitchenette - Logements	1/20°
16.9 Détail salle de bain - Logements	1/20°
16.10 Détail cage escalier - Pignon Ouest 1/2	1/20°
16.11 Détail cage escalier - Pignon Ouest 2/2	1/20°
16.12 Détail grille jardin - Rampe parking	1/20°
16.13 Détail portes sortie de secours - Façade Nord	1/20°
16.14 Détail gaine d'extraction - Niveau SS-2 et SS-1	1/20°
16.15 Détail portail basculant - Entrée / sortie parking (plan)	1/20°
16.16 Détail portail basculant - Entrée / sortie parking (élévation)	1/20°
16.17 Détail portail basculant - Entrée / sortie parking (coupe)	1/20°
16.18 Détail corniche béton et gouttière en zinc	1/5°
16.19 Détail exutoire de désenfumage - Cage d'escalier	1/10°
16.20 Détail capteurs solaires - Toiture Sud	1/10°



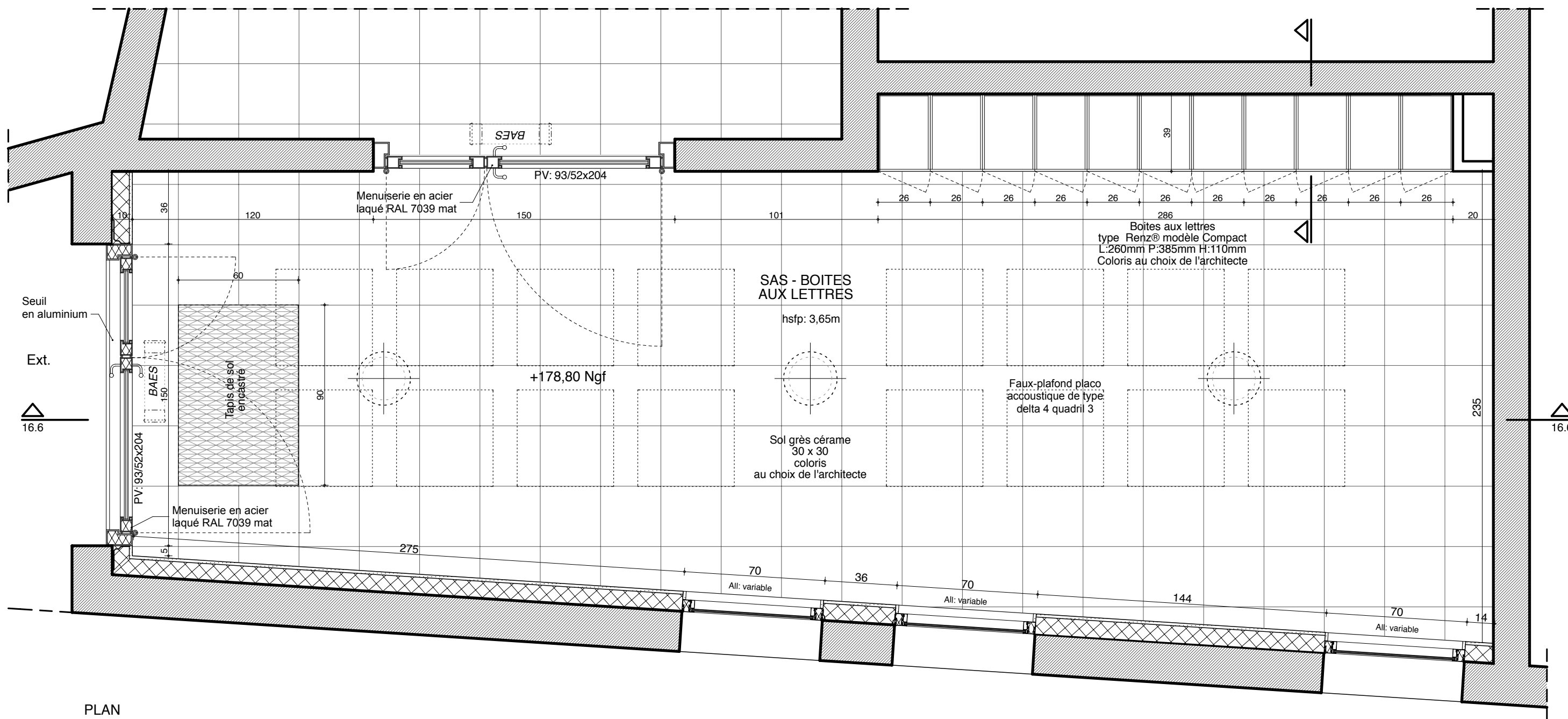




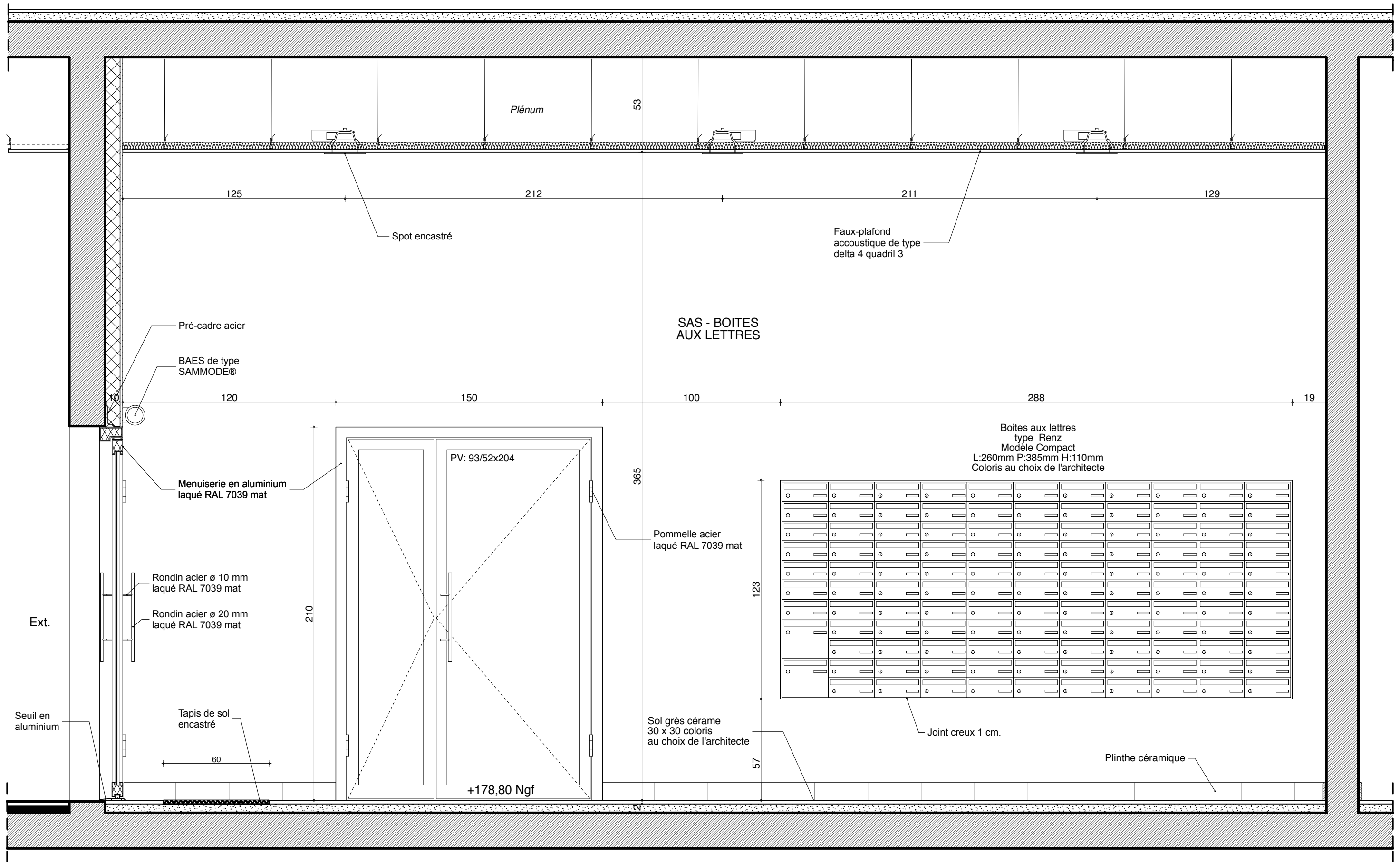


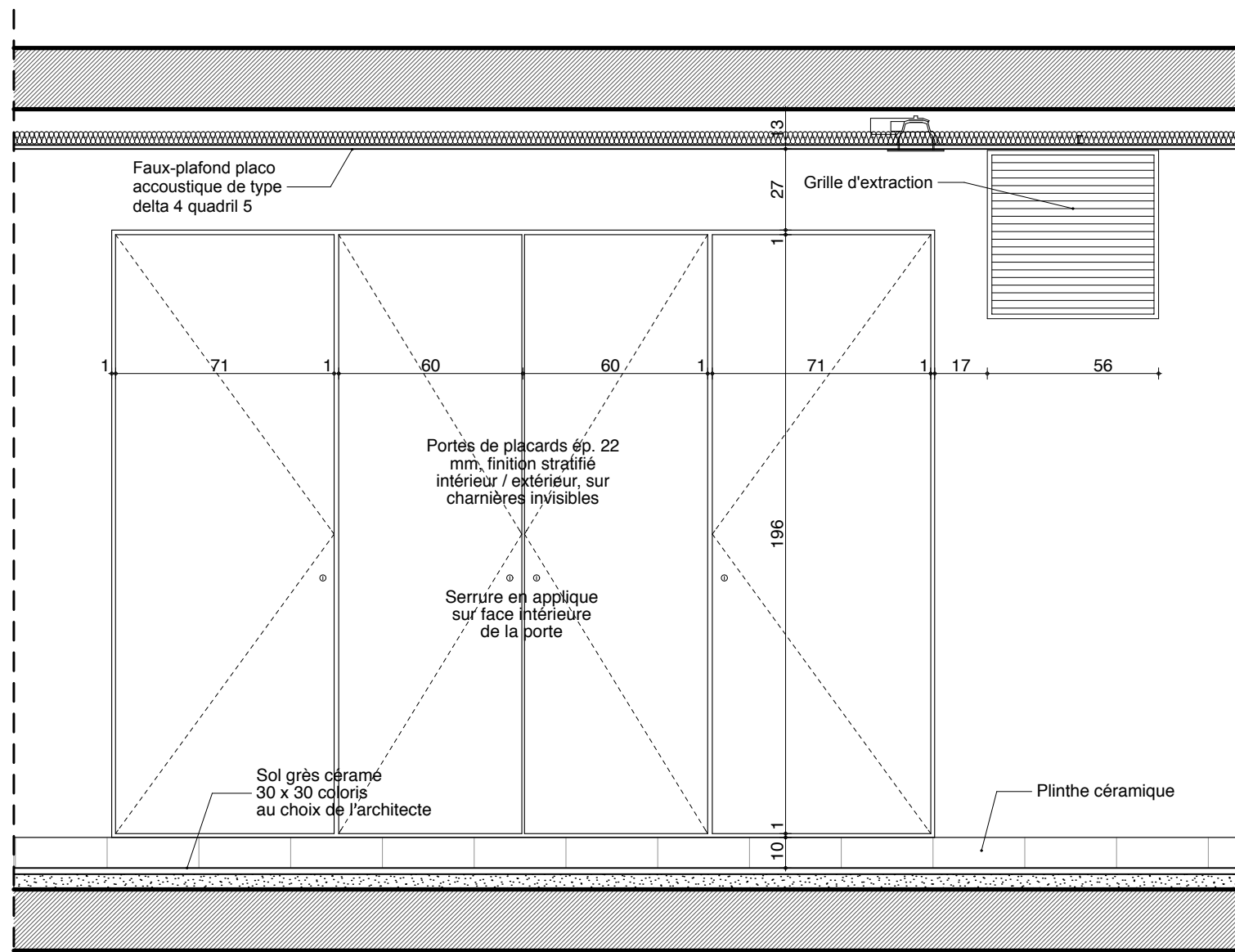


COUPE

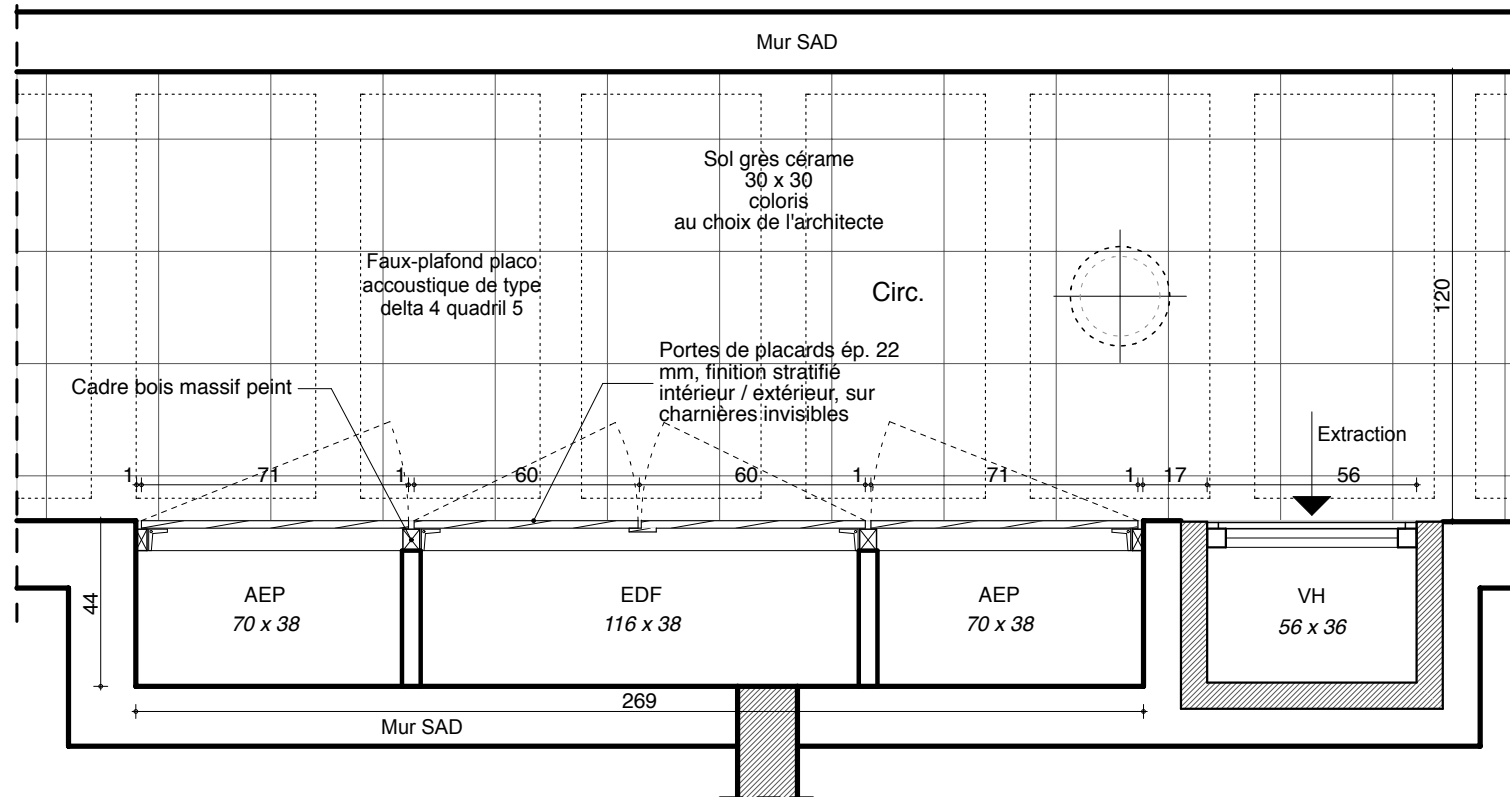


PLAN

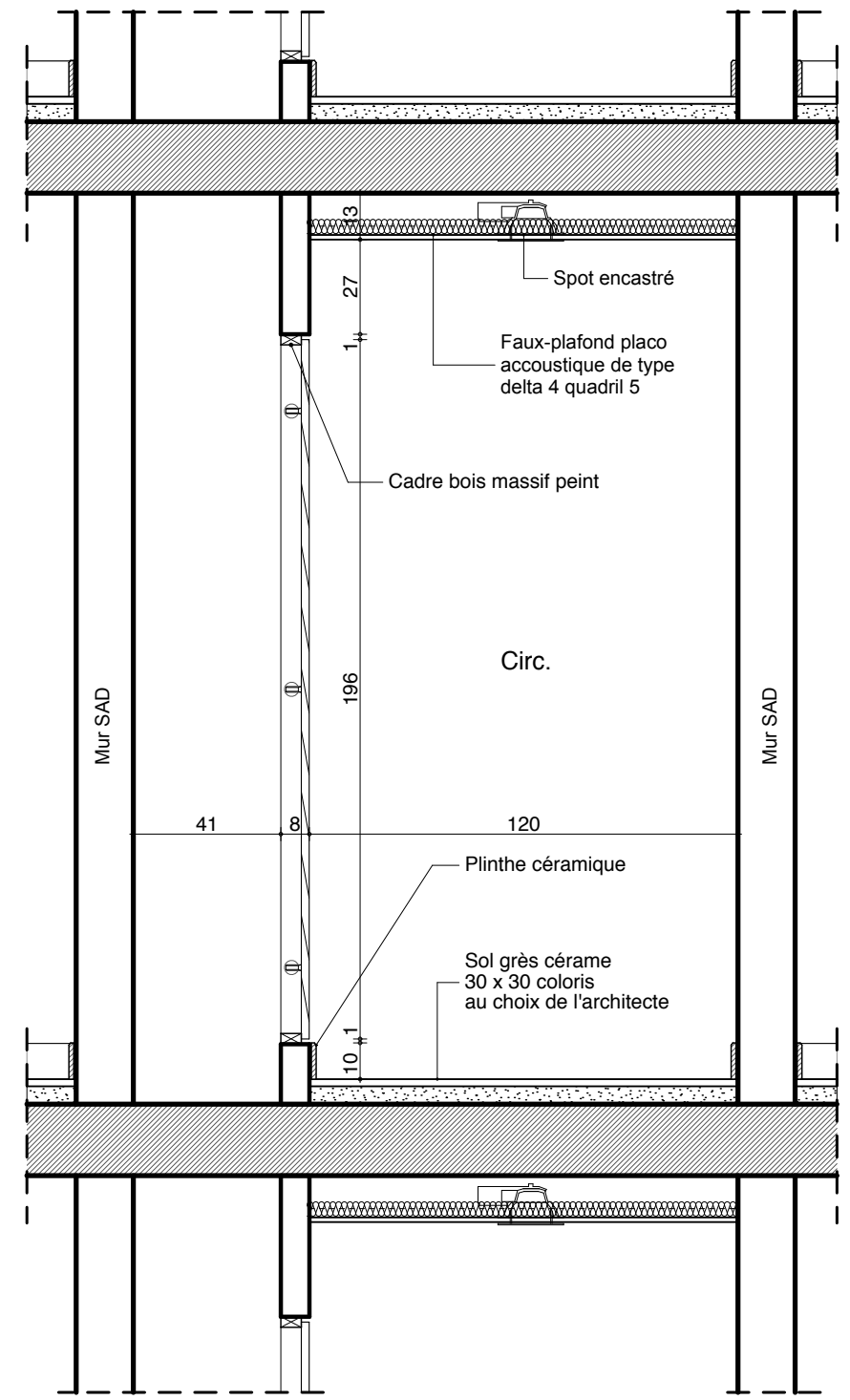




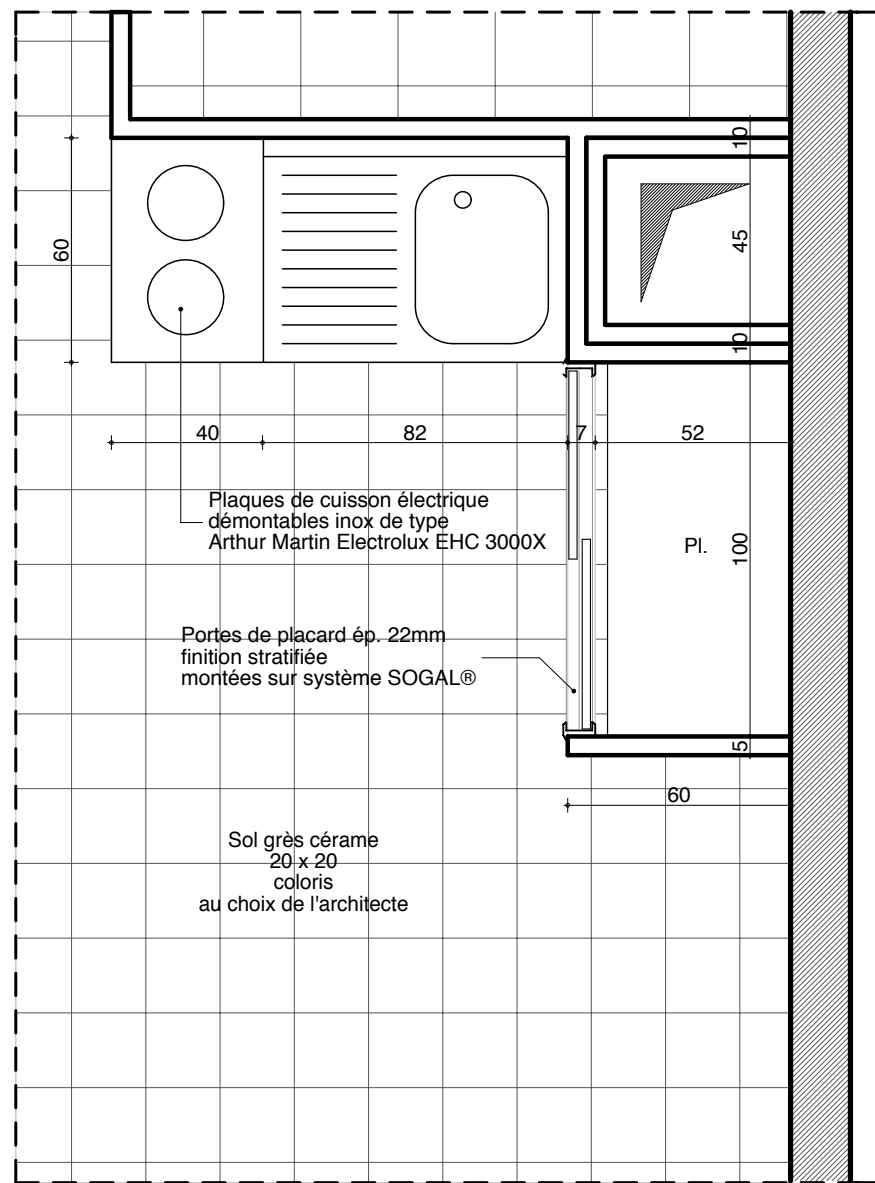
ELEVATION



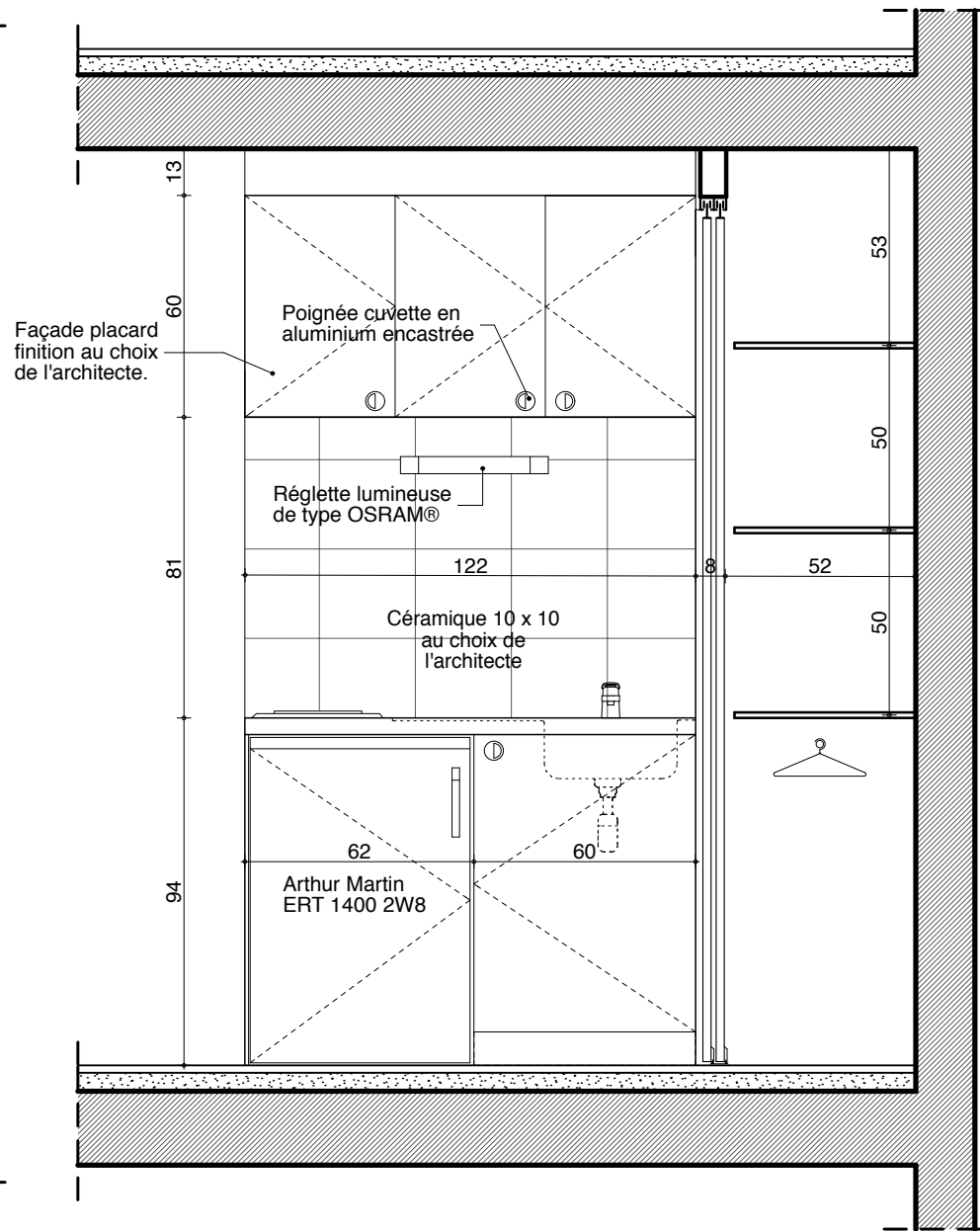
PLAN



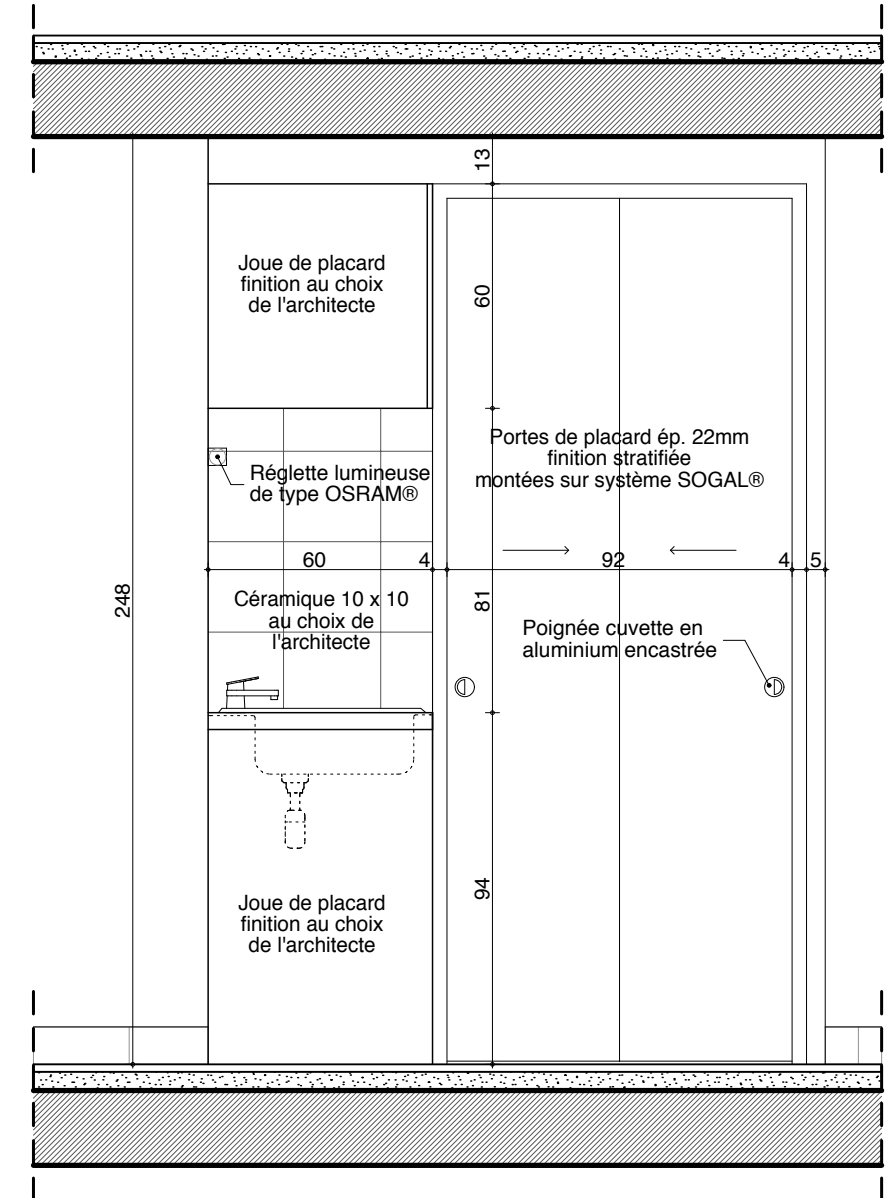
COUPE



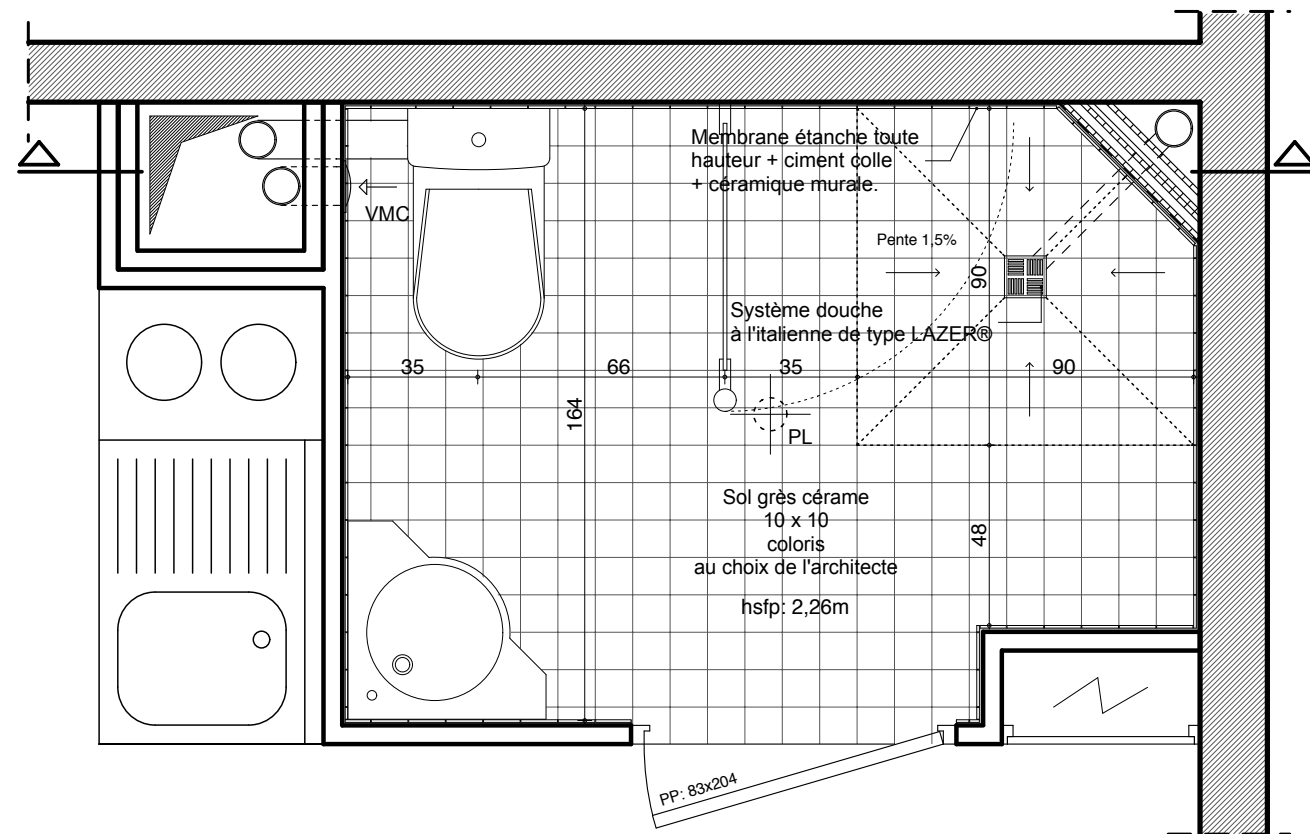
PLAN



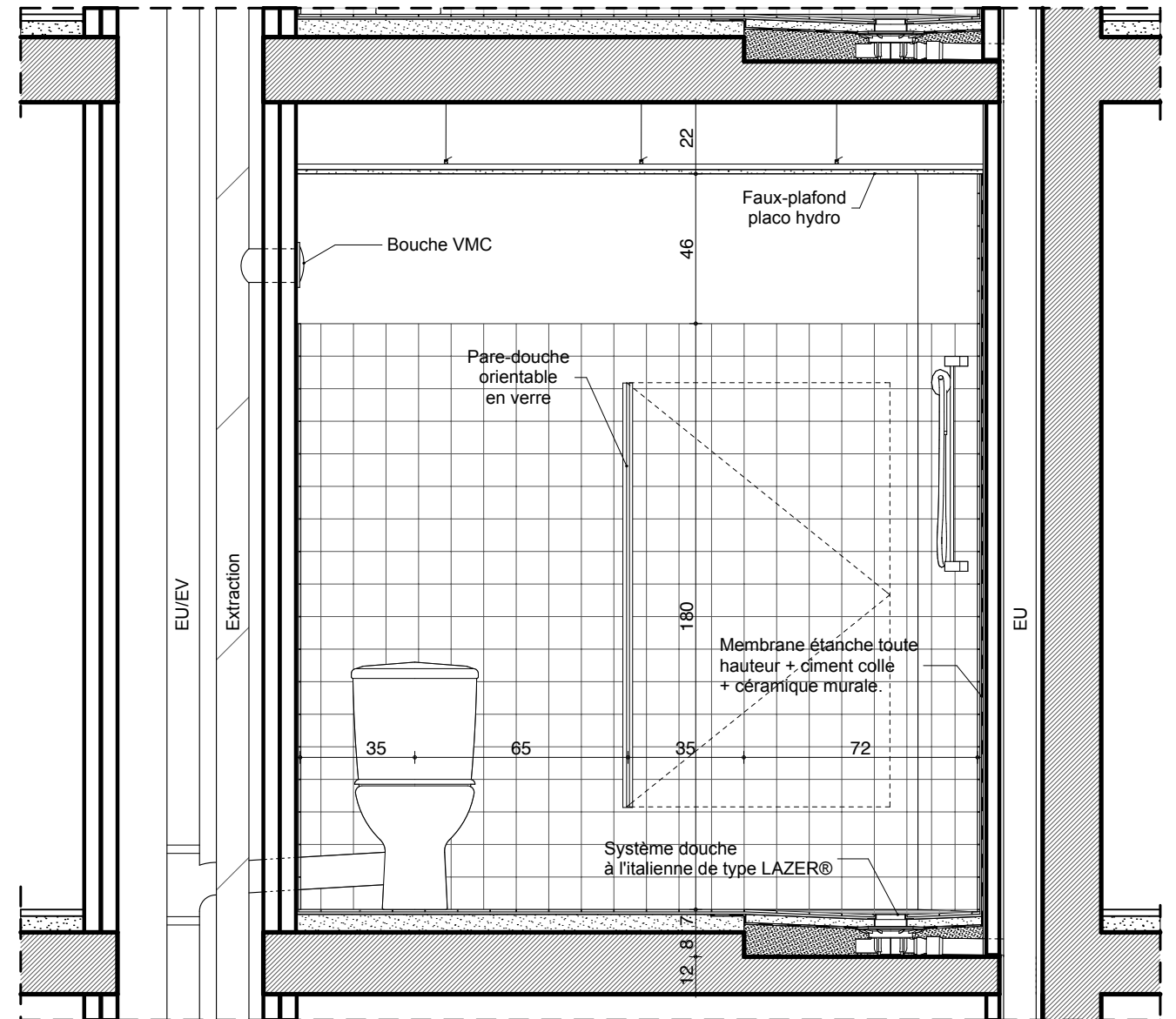
COUPE



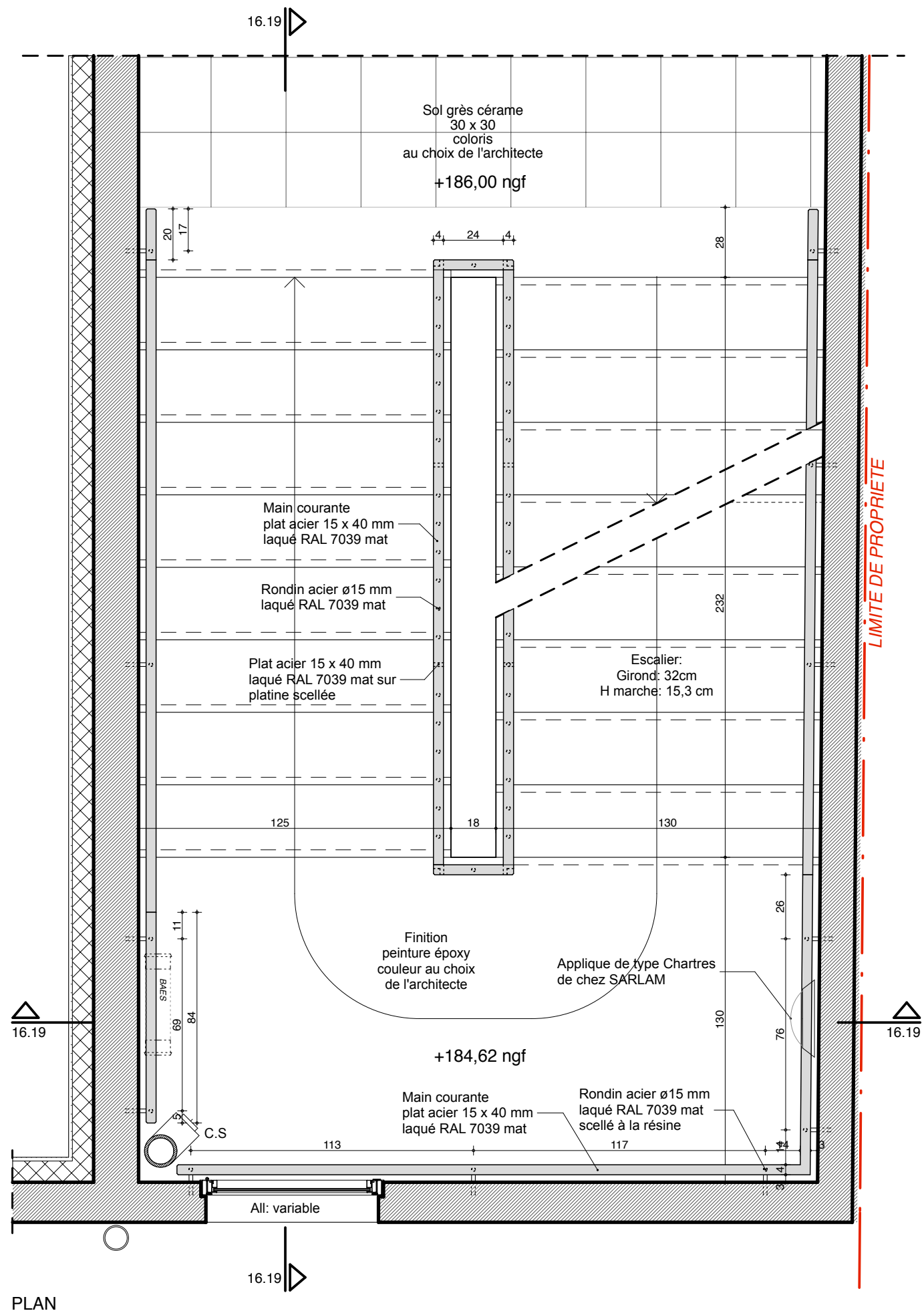
ELEVATION



PLAN



COUPE



PLAN

